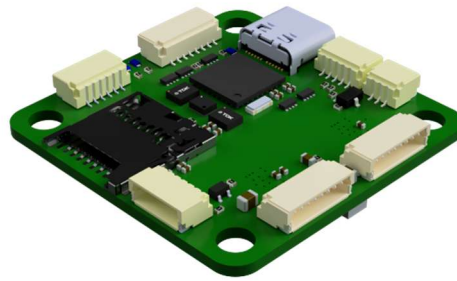


NarinFC_X3

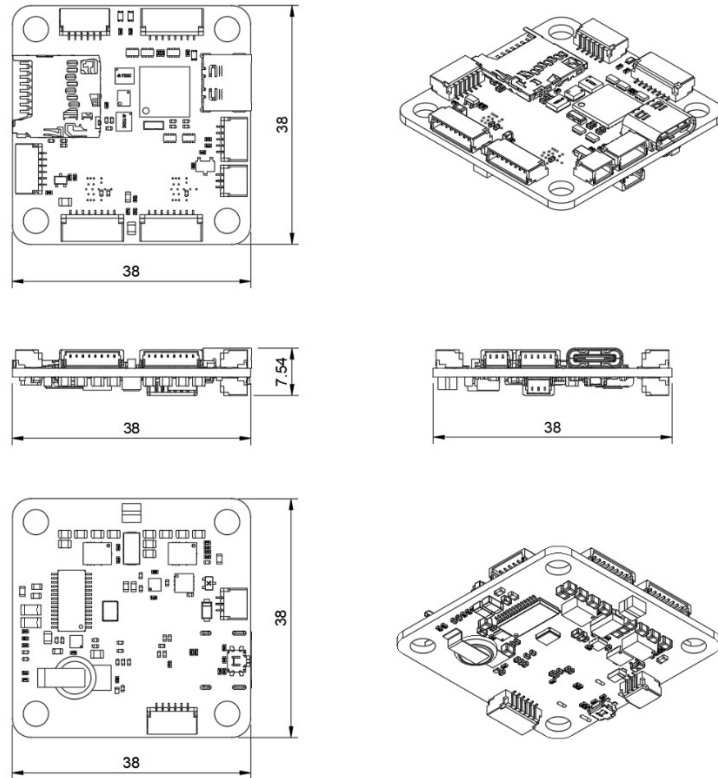


1. Basic Parameters

Main FMU Processor	<ul style="list-style-type: none"> • STM32H743
On-board sensors	<ul style="list-style-type: none"> • Accelerometer/Gyroscope: ICM-42688-P • Accelerometer/Gyroscope: ICM-42688-P • Barometer: DPS368
Interfaces	<ul style="list-style-type: none"> • 12 x PWM Output • 1 x I2C • 1 x CAN • 5 x UART • 1 x USB Type-C • 1 x MicroSD card • JST Connector (SH1.0)
Power System	<ul style="list-style-type: none"> • Input Power 6VDC ~ 36VDC (2S ~ 8S) • Output Power <ul style="list-style-type: none"> - 5VDC 2.5A - 9VDC 2.5A - 3.3VDC 0.5A
Size	<ul style="list-style-type: none"> • 38mm x 38mm (Mount hole 30.5mm x 30.5mm)
Weight	<ul style="list-style-type: none"> • 8g
Support F/W	<ul style="list-style-type: none"> • ArduPilot • BetaFlight

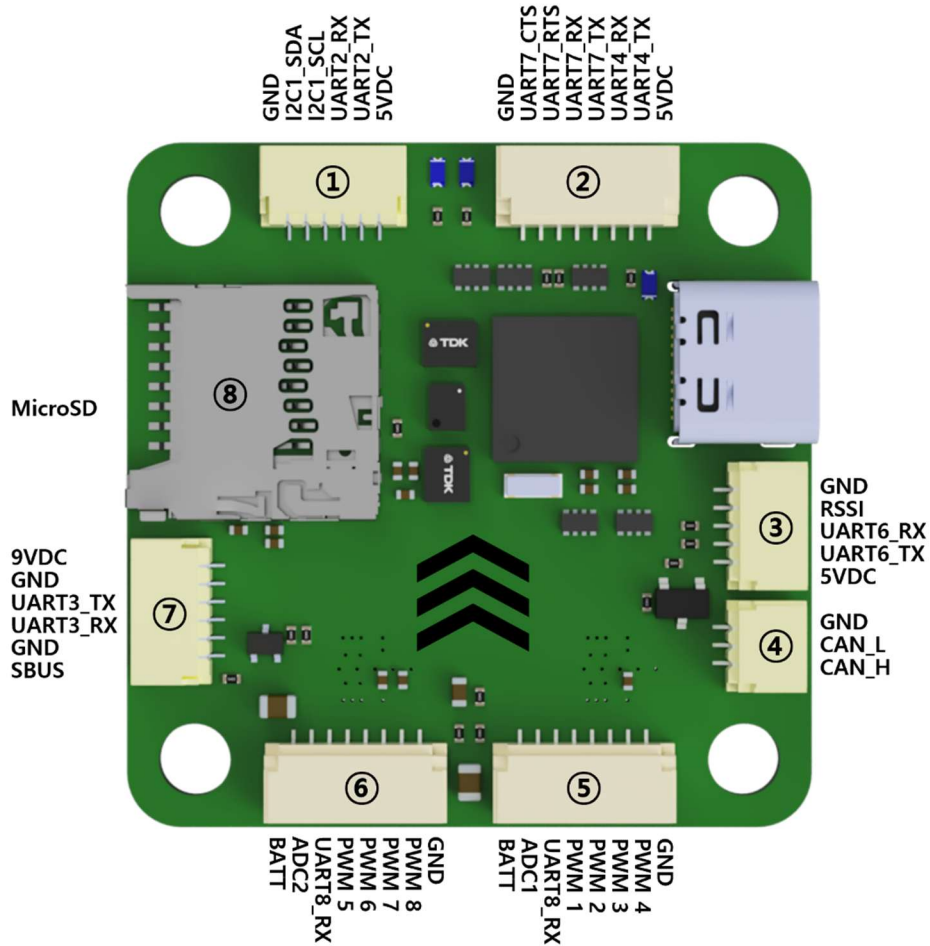
[註1. Parameter]

2. Outline Dimensions



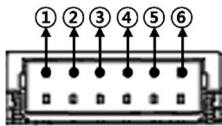
[그림 1. Outline Dimensions]

3. Port Diagram & Pin outs



① I2C1, UART2 PORT

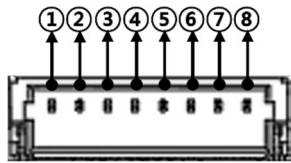
✓ UART 2: Ardupilot port Serial2 GPS1



①	5VDC
②	UART2_TX
③	UART2_RX
④	I2C1_SCL
⑤	I2C1_SDA
⑥	GND

② UART 7, UART 4 PORT

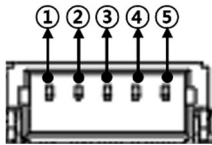
- ✓ UART 7: Ardupilot port Serial7 Telem_2
- ✓ UART 4: Ardupilot port Serial4 Telem_1



①	5VDC
②	UART4_TX
③	UART4_RX
④	UART7_TX
⑤	UART7_RX
⑥	UART7_RTS
⑦	UART7_CTS
⑧	GND

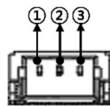
③ UART6, RSSI PORT

- ✓ UART 6: Ardupilot port Serial6 Receiver



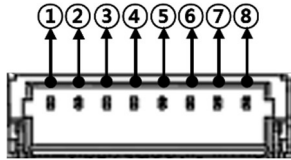
①	5VDC
②	UART6_TX
③	UART6_RX
④	RSSI
⑤	GND

④ CAN PORT



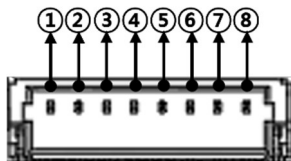
①	5VDC
②	CAN_L
③	CAN_H

⑤ PWM PORT-1



①	BATT IN
②	ADC 1
③	UART8_TX
④	PWM 1
⑤	PWM 2
⑥	PWM 3
⑦	PWM 4
⑧	GND

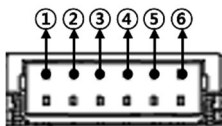
⑥ PWM PORT-2



①	BATT IN
②	ADC 2
③	UART8_TX
④	PWM 5
⑤	PWM 6
⑥	PWM 7
⑦	PWM 8
⑧	GND

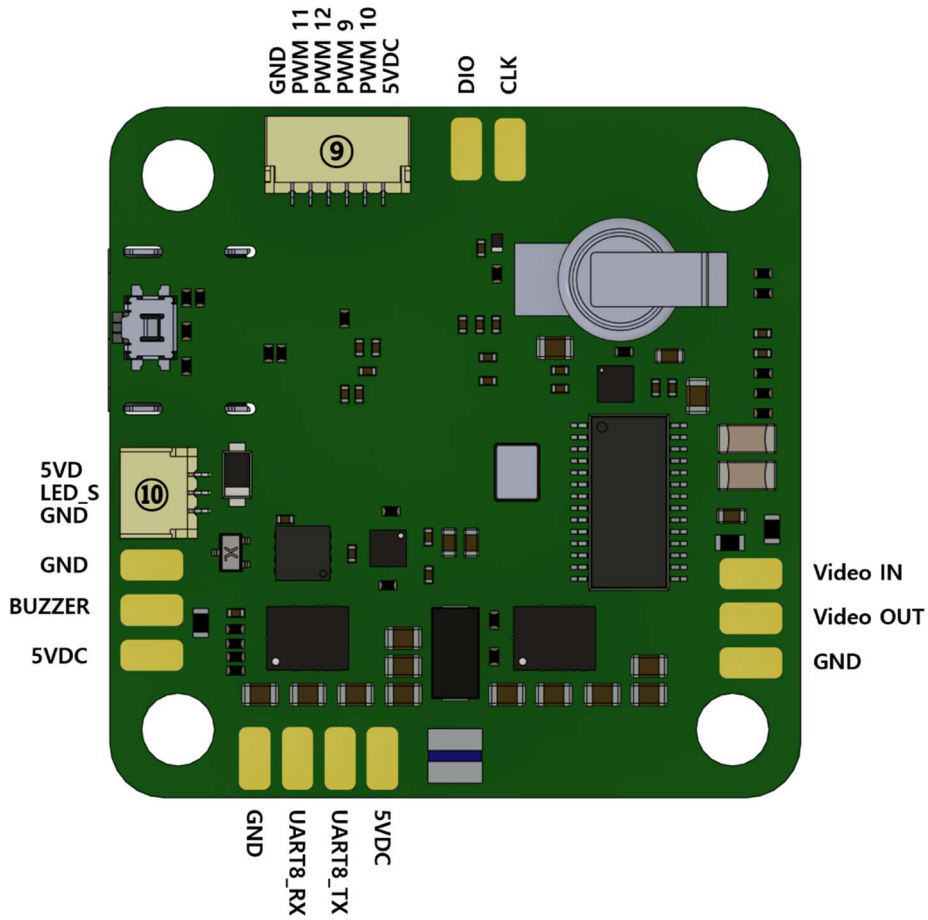
⑦ UART3 PORT

✓ UART3: Ardupilot port Serial3 MSP Display Port

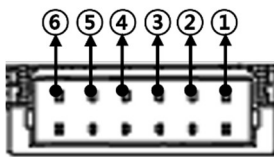


①	9VDC
②	GND
③	UART3_TX
④	UART3_RX
⑤	GND
⑥	SBUS

⑧ MicroSD Card slot

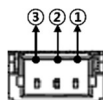


⑨ PWM PORT-3



①	5VDC
②	TELEM_TX
③	TELEM_RX
④	TELEM_CTS
⑤	TELEM_RTS
⑥	GND

⑩ LED PORT



①	5VDC
②	LED_S
③	GND