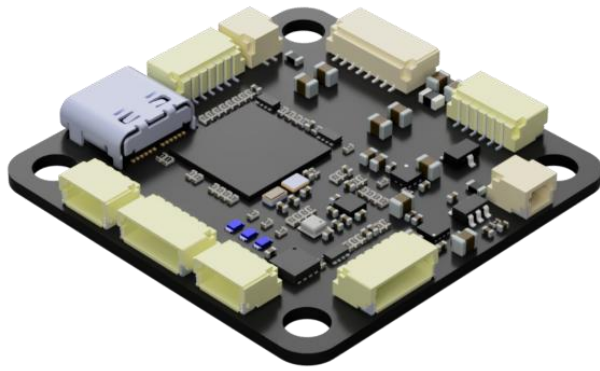


NarinFC_X3Pro

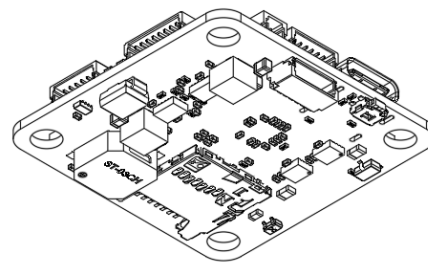
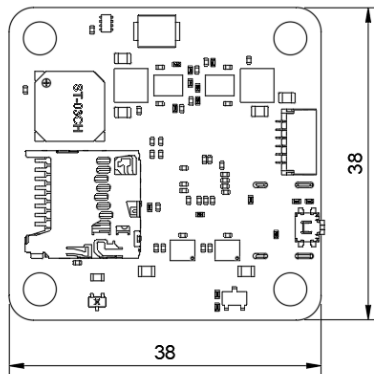
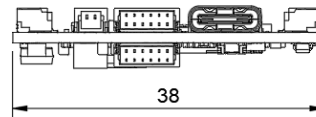
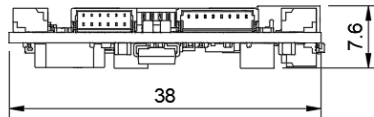
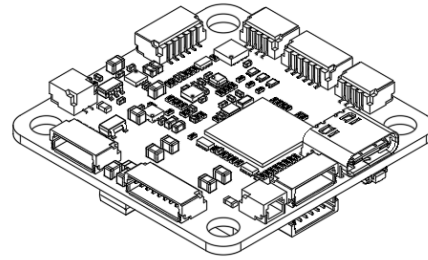
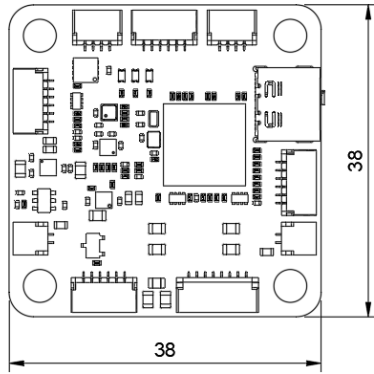


1. Basic Parameters

Main FMU Processor	<ul style="list-style-type: none"> • STM32H743
On-board sensors	<ul style="list-style-type: none"> • Accelerometer/Gyroscope: IIM-42653 • Accelerometer/Gyroscope: IIM-42653 • Barometer: BMP390
Interfaces	<ul style="list-style-type: none"> • 9 x PWM Output • 1 x I2C • 1 x CAN • 5 x UART • 1 x USB Type-C • 1 x MicroSD card • JST Connector (SH1.0)
Power System	<ul style="list-style-type: none"> • Input Power 6VDC ~ 36VDC (2S ~ 8S) • Output Power <ul style="list-style-type: none"> - 5VDC 2.5A - 12VDC 2.5A - 3.3VDC 0.5A
Buzzer	<ul style="list-style-type: none"> • Onboard Buzzer
Size	<ul style="list-style-type: none"> • 38mm x 38mm (Mount hole 30.5mm x 30.5mm)
Weight	<ul style="list-style-type: none"> • 8g
Support F/W	<ul style="list-style-type: none"> • ArduPilot • PX4 • BetaFlight

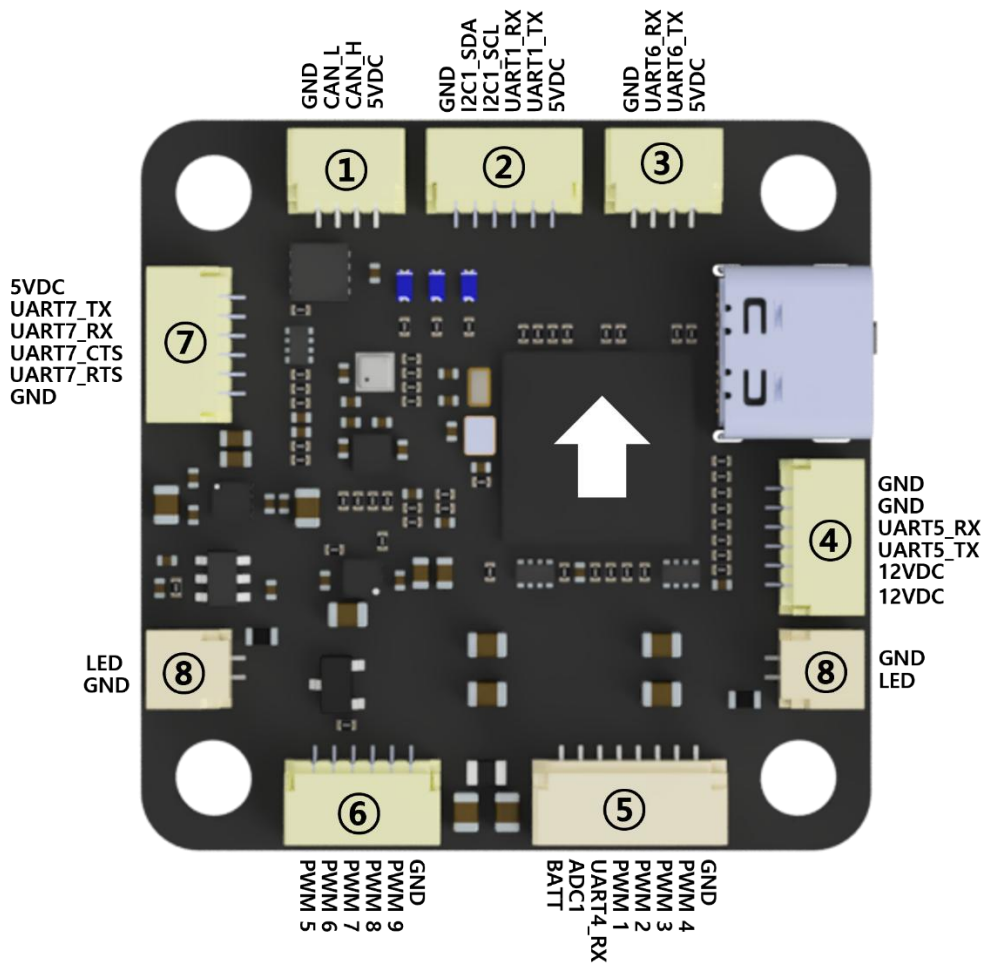
[Parameter]

2. Outline Dimensions

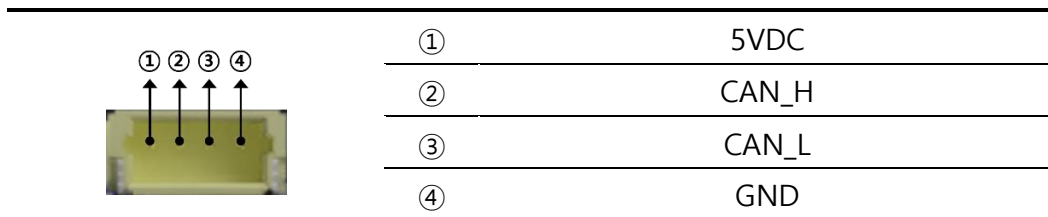


[Outline Dimensions]

3. Port Diagram & Pin outs

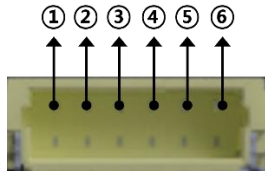


① CAN PORT



② GPS PORT

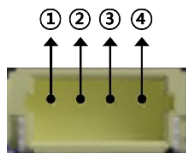
✓ UART 1: Ardupilot port Serial3



①	5VDC
②	UART4_TX
③	UART4_RX
④	UART7_TX
⑤	UART7_RX
⑥	GND

③ RC PORT

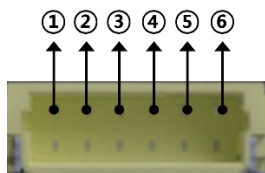
✓ UART 6: Ardupilot port Serial6 Receiver



①	5VDC
②	UART6_TX
④	UART6_RX
	GNS

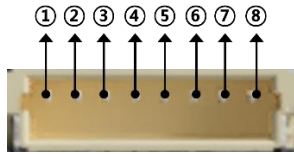
④ VTX PORT

✓ UART 5: Ardupilot port Serial2



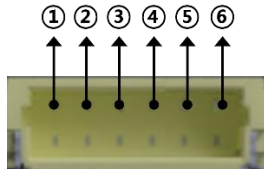
①	12VDC
②	12VDC
③	VTX TX(UART5_TX)
④	VTX RX(UART5_RX)
⑤	GND
⑥	GND

⑤ PWM PORT-1



①	BATT IN
②	ADC 1
③	UART4_TX
④	PWM 1
⑤	PWM 2
⑥	PWM 3
⑦	PWM 4
⑧	GND

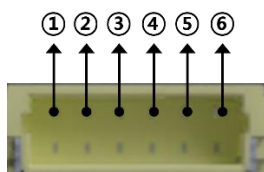
⑥ PWM PORT-2



①	PWM 5
②	PWM 6
③	PWM 7
④	PWM 8
⑤	PWM 9
⑥	GND

⑦ TELEM PORT

✓ UART3: Ardupilot port Serial1

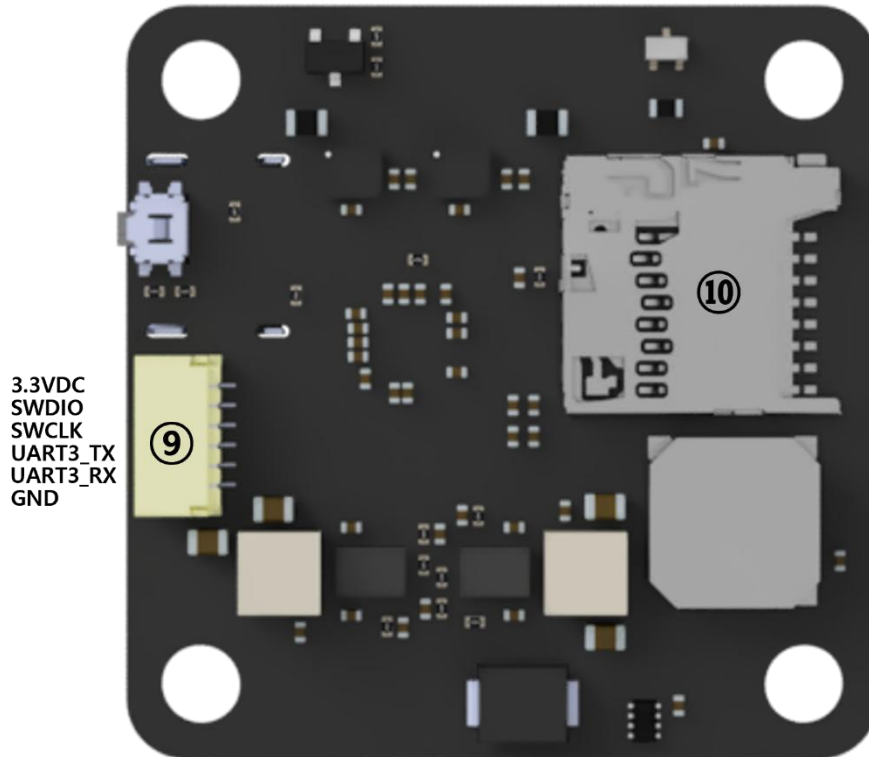


①	5VDC
②	UART7_TX
③	UART7_RX
④	UART7_CTS
⑤	UART7_RTS
⑥	GND

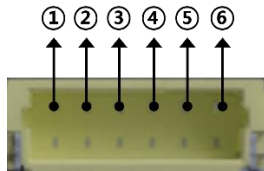
⑧ LED PORT



①	5VDC
③	GND



⑨ DEBUG PORT



①	3.3VDC
②	SWDIO
③	SWCLK
④	UART3_TX
⑤	UART3_RX
⑥	GND

⑩ SD Card