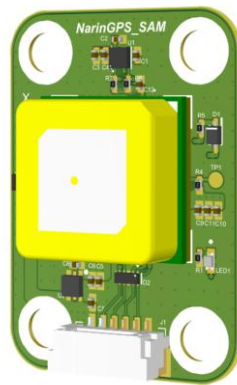


NarinGPS_SAM

Manual



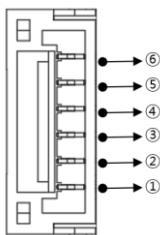
1. Basic Parameters

On-board sensors	<ul style="list-style-type: none"> • Ublox SAM-M10Q <ul style="list-style-type: none"> - Less than 38mW power consumption without compromising GNSS performance. - Maximum position availability with 4 concurrent GNSS reception. • Magnetometer: ST LIS2MDLTR
Interfaces	<ul style="list-style-type: none"> • 6Pin JST GH Connector • UART/I2C
LED Indicator	<ul style="list-style-type: none"> • 3.3V Power (RED) • GPS Fix (GRN)
Power System	<ul style="list-style-type: none"> • Input voltage 5VDC • POWER: <300mW
Size	<ul style="list-style-type: none"> • 25mm x 35mm x 10mm
Weight	<ul style="list-style-type: none"> • 10g

[Parameter]

2. Pin outs

- UART, I2C Port (JST GH 6P Connector)
- UART: GPS DATA
- I2C: Magnetometer (LIS2MDLTR)
 - Note: The NarinGPS-SAM MAG sensor may not be compatible with some flight controllers. It is compatible with the NarinFC-X3.



①	5VDC
②	UART_RXD
③	UART_TXD
④	I2C_SCL
⑤	I2C_SDA
⑥	GND

[Pinout]